



# HELIUS MEDIAVIEWER

INSTRUCTION MANUAL

# MEDIAVIEWER

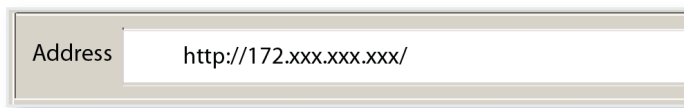
## INSTRUCTIONS

MediaViewer is available to assist Heliuss customers downloading data or media files that have been transferred to the Router via MediaWrite.

To use MediaViewer, the customer computer should be connected via the ethernet to the same network as the Router.

### Login

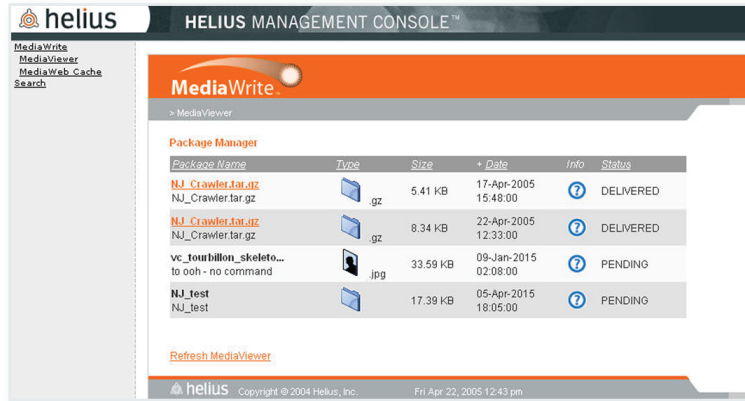
1. Open an Internet browser.
2. Enter the IP address of the Router: `http://IP_address/`.



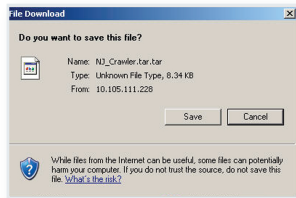
A screenshot of a browser's address bar. The label 'Address' is on the left, and the text 'http://172.xxx.xxx.xxx/' is entered in the input field.

3. The Heliuss Management Console will open in the browser window with MediaViewer displayed.

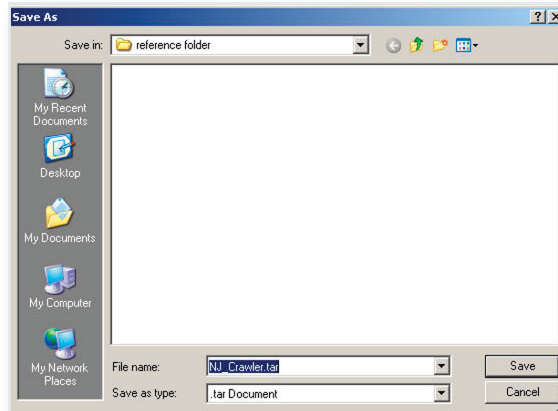
## Download files from the router



1. Select a highlighted file name to download.



2. Select SAVE.



3. Identify the location on your PC to save the file.
4. Select SAVE.



Helius, Inc.  
333 South 520 West Ste. 330  
Lindon, UT 84042  
[www.helius.com](http://www.helius.com)